



# OTDR for Saber

## Pluggable OTDR for Saber platform

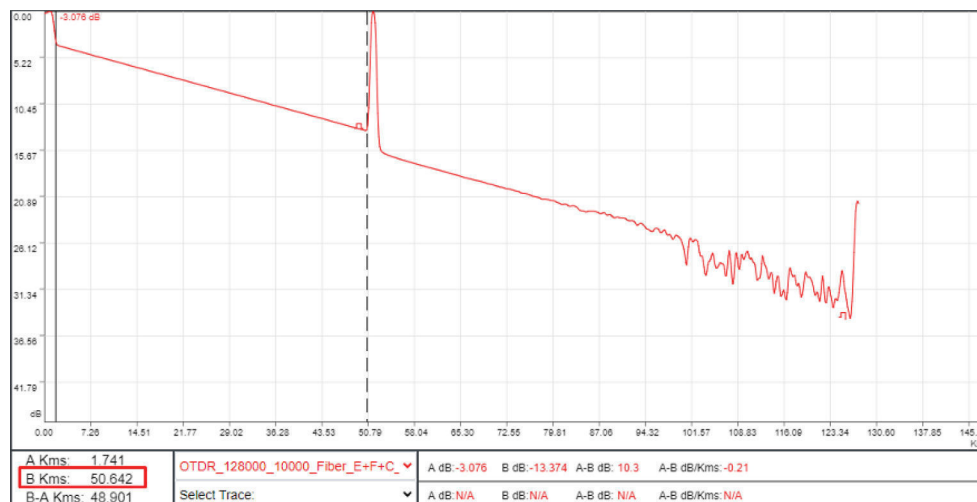
The Smart SFP+ OTDR (Optical Time Domain Reflectometer) is a pluggable unit, enabling SABER-4400 platform to test optical fiber links, detect faults, measure fiber, splice and connector losses, total span loss and cable length.

### Features & Benefits

- + Compact SFP+ format
- + Measure fiber links up to 128km
- + Hot pluggable in several Saber modules.
- + GR-3108 OSP Class 2 compliant while in Sabermodule/platform
- + Integrated with Zhone Xtreme OEO/SDN-C
- + Support exporting in SOR (Standard OTDR Record) data format. (Telcordia SR-4731)

The pluggable OTDR offers an optional and compact solution for measuring optical links where SABER-4400 is deployed. The OTDR can be inserted in front panel SFP+ slot of SABER-4400 modules such as RDM-4400, OFA-xx20 etc. When operated into SABER-4400 modules the OTDR is hardened and GR-3108 OSP Class 2 compliant.

The pluggable OTDR can be managed with the embedded OSM-4400 GUI and WILL integrate into the Zhone Xtreme Optical Edge Orchestration Platform.



# OTDR for SABER

## Product Specifications

Specification	Description
Platform Dimensions	SFP+ pluggable format
Wavelength, nm	1611 (typical)
Optic Ports	LC
Management Support	Zhone Xtreme, OSM-4400, (CLI, SNMP, NETCONF/YANG, GNMI)
Distance range, km	2, 5, 25, 50, 100, 128
Pulse Width, ns	10 to 20000
Dynamic range, dB	30 max
Loss Measurement accuracy, dB	+/- 0.1dB
Operating Temperature	-40° to 65° C (-40° to 149° F) when inserted in Saber-4400 chassis
Operation Humidity	5-90, %RH
Storage Temperature	-40 to 85°C
Storage Humidity	5-95, %RH

## Supported Sleds/Modules

Supported Sled Family	Description
1032-5700	RDM-4400, 2D CD FLEX ROADM, 3 qtr width sled
1015-6629	OFA-1720-D, 17dB Output Max, 20dB Gain - Dual amp - in REL8.3
1015-6631	OFA-2020-D, 20dB Output Max, 20dB Gain - Dual amp - in REL8.3

## Ordering Information

System	Description
OTDR	1006-4202



Zhone Technologies, Inc